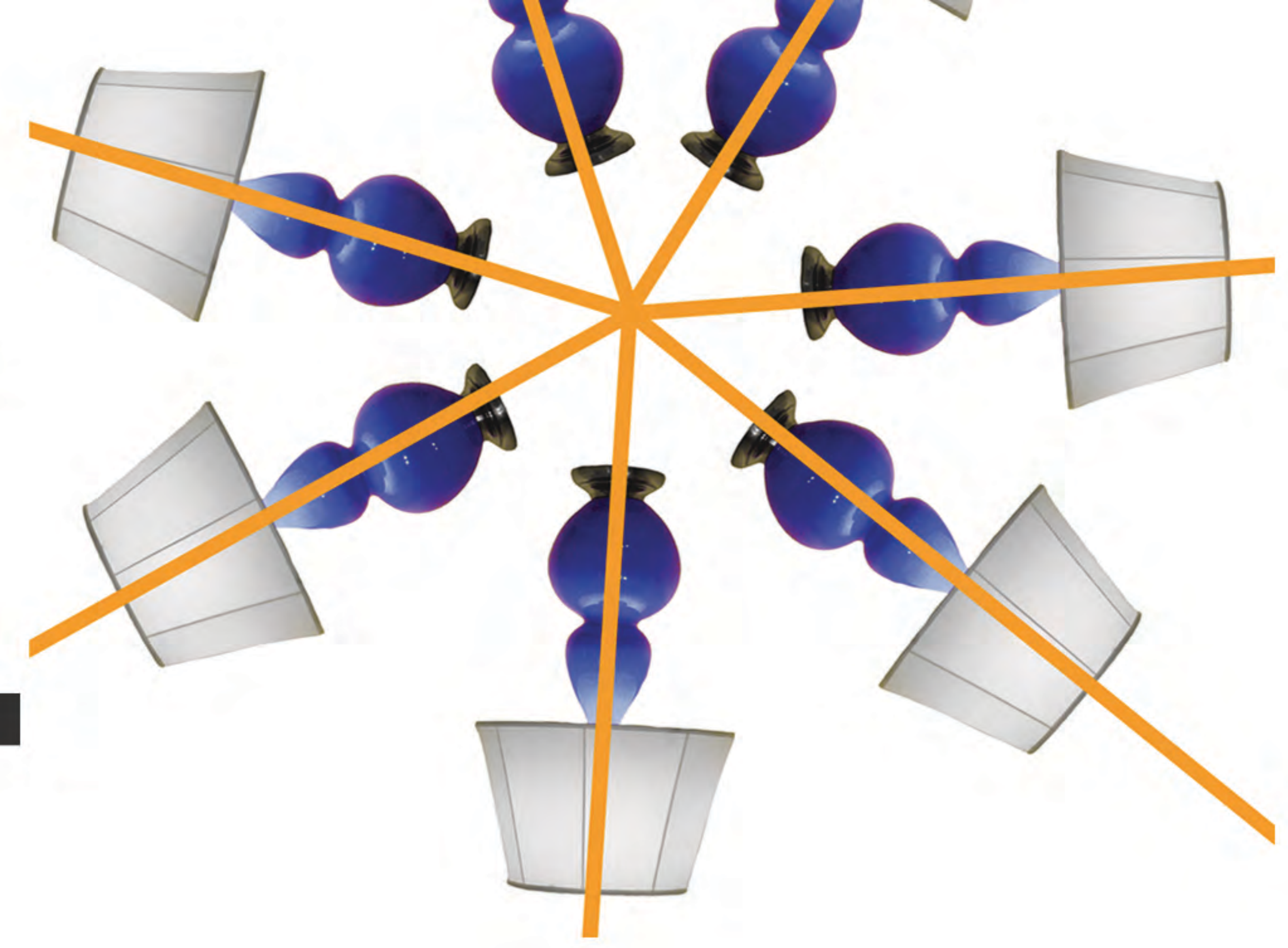


1. Radial symmetry



BALANCE +

SYMMETRY

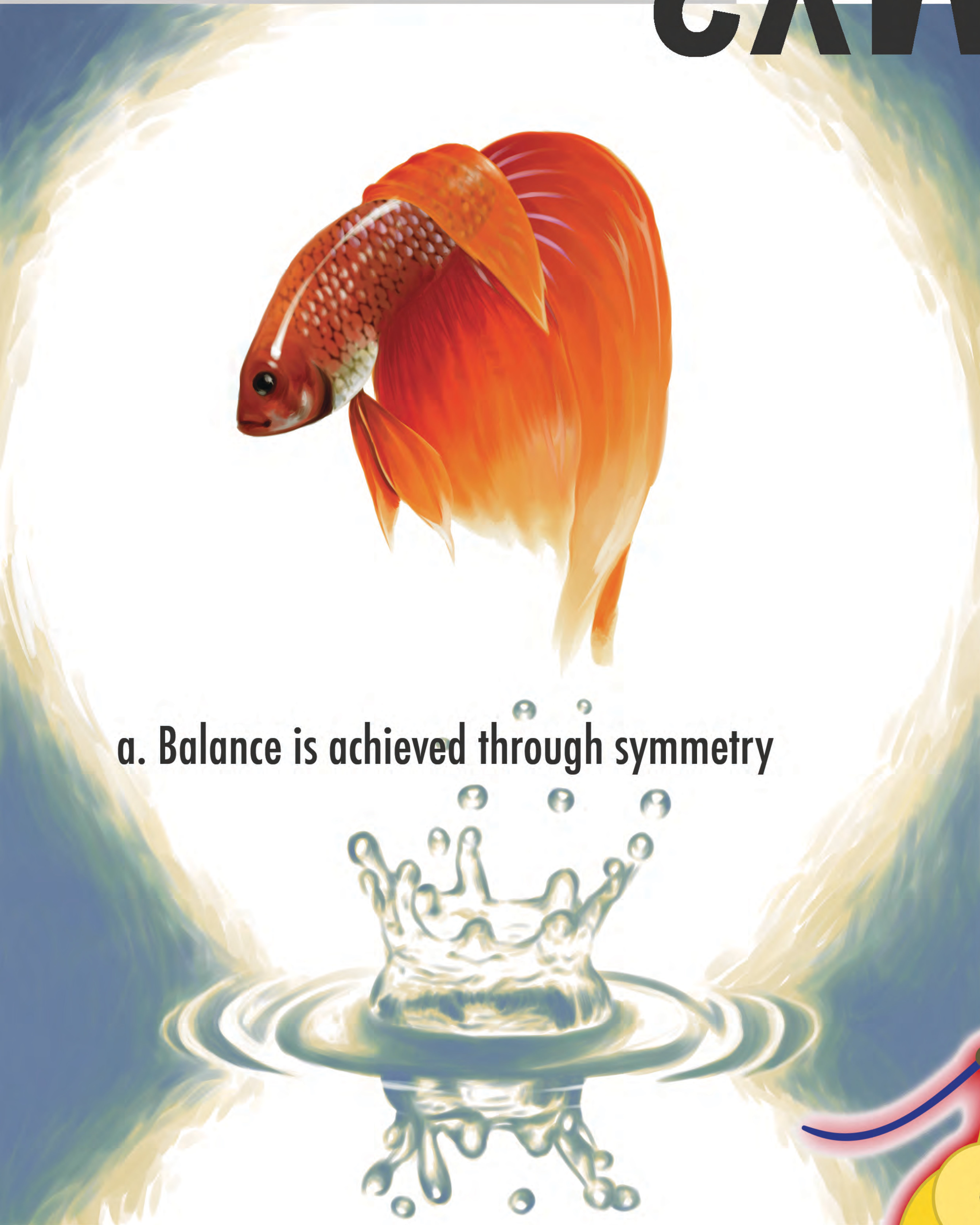
2. Asymmetry



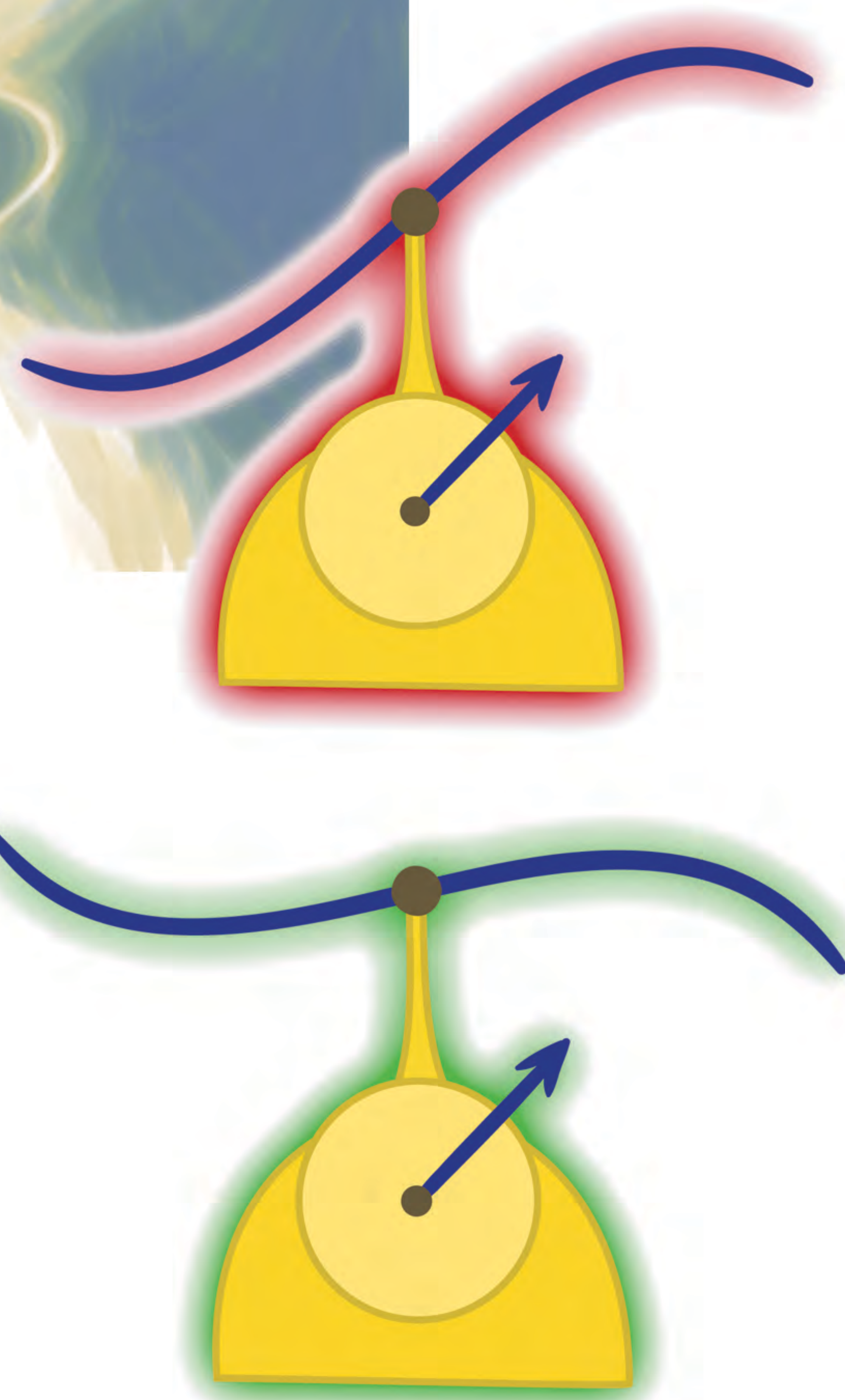
3. Symmetry



a. Balance is achieved through symmetry



A balanced design gives the audience a comfortable feeling that everything is holding together. Controlling the position of design elements or varying the size, colour, and value of the elements can achieve equal visual weight.



b. Balance is achieved through asymmetry

